

PRODUCT FACTSHEET

EMERGENCY EXIT SYSTEM

The Safe-S-Cape is a unique key-less exit system. Even though Safe-S-Capes are easy to escape from internally, they are still incredibly difficult to penetrate from the outside as they feature the same screw clamp system as traditional Crimsafe grilles.



02 4726 5700 | nepeanblinds.com.au
Unit 1/89 Batt Street, Penrith NSW 2750



NEPEAN
BLINDS & DOORS

CRIMS SAFE-S-CAPE

Technical Info

Mesh

Crimsafe Safe-S-Capes feature Crimsafe Tensile-Tuff® Security Mesh, which is made of 304 Grade Stainless Steel.

Clamp System

Crimsafe Security Doors feature a patented Security Screw Clamp System. While inferior products simply glue or wedge mesh into a frame, Crimsafe sandwiches Tensile-Tuff® Security mesh between two serrated pieces of aluminium, then screws this mesh into place. This results in a strong, vice-like grip which has a much stronger tolerance to force than many competing products.

Hinged

Crimsafe Safe-S-Capes can be hinged at the top or sides and made to swing outward or inward. This makes them suitable for most window openings.

Colour

Crimsafe Safe-S-Capes are available in a range of different colours.

Benefits

Excellent Security

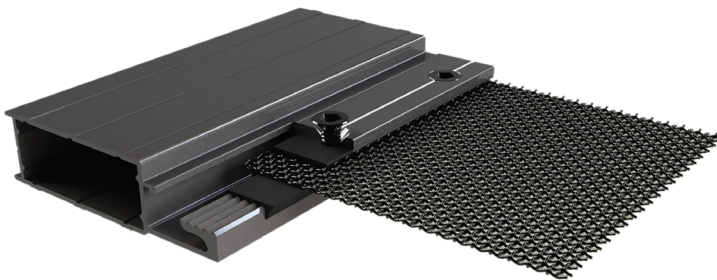
Crimsafe Safe-S-Capes allow an easy exit from inside, but remain incredibly difficult to penetrate from the outside.

Quick Exit

A Crimsafe Safe-S-Cape allows for a quick exit in an emergency.

Satisfaction Guaranteed

Crimsafe Safe-S-Capes come with a 10 Year standard Warranty, with the option to extend to 15 years.



Cross section of mesh and frame



Close-up from inside

